

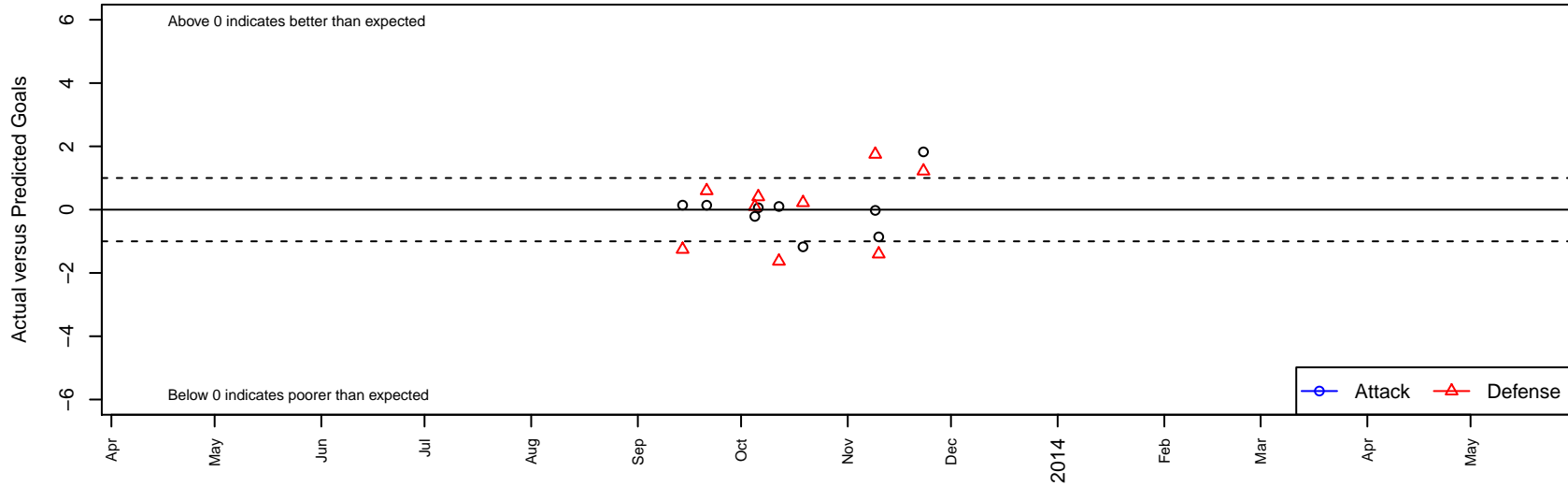
# FCA Chelsea B01

, CAN  
 B01 total strength=856  
 attack=1.29 defense=1.14  
 alt names used:  
 FCA Chelsea

Venues played:  
 NorCal Premier F11 – Region 3–4 U12



**FCA Chelsea B01**  
 Dots are actual minus expected GF (blue circles) and GA (red triangles).  
 Blue line is smoothed change in attack strength. Red is smoothed change in defense strength.



	<b>date</b>	<b>home</b>		<b>away</b>		<b>venue</b>	<b>pred.home</b>	<b>pred.away</b>
19077	2013-11-23	Bay Oaks SC United B01	0	FCA Chelsea B01	4	NorCal Premier F11 – Region 3-4 U12	1.22	2.17
18029	2013-11-10	FCA Chelsea B01	0	Diablo FC B01	3	NorCal Premier F11 – Region 3-4 U12	0.86	1.60
17660	2013-11-09	FCA Chelsea B01	2	Richmond Sol Cobras B01	0	NorCal Premier F11 – Region 3-4 U12	2.02	1.75
14855	2013-10-19	FCA Chelsea B01	1	Bay Oaks SC United B01	1	NorCal Premier F11 – Region 3-4 U12	2.17	1.22
13793	2013-10-12	FCA Chelsea B01	1	Alliance FC Victory B01	4	NorCal Premier F11 – Region 3-4 U12	0.90	2.37
13252	2013-10-06	BUSC 02 Premier B01	1	FCA Chelsea B01	2	NorCal Premier F11 – Region 3-4 U12	1.40	1.94
12778	2013-10-05	FCA Chelsea B01	1	Castro Valley United Green B01	1	NorCal Premier F11 – Region 3-4 U12	1.21	1.10
10882	2013-09-21	Diablo FC B01	1	FCA Chelsea B01	1	NorCal Premier F11 – Region 3-4 U12	1.60	0.86
9909	2013-09-14	Mustang SC Estudiantes B01	3	FCA Chelsea B01	1	NorCal Premier F11 – Region 3-4 U12	1.74	0.86